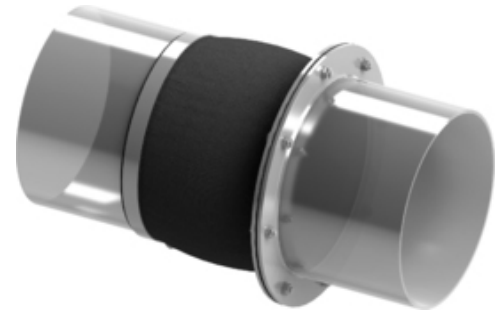


Type 51 Fabric Expansion Joint

Standard model tubular fabric expansion joint composed of single- or multi-layer fabric, available in cylindrical or rectangular shape for mounting with mixed couplings.

This expansion joint allows connecting identical cross-sections by flange and clamp couplings.

For detailed technical specifications on Type 51 fabric expansion joints please check the following table and documents or [contact us](#).

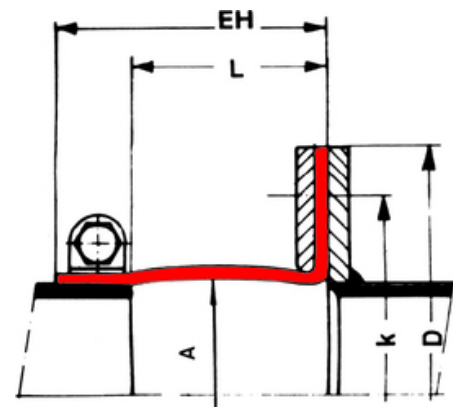


Note | Type 51 - Fabric Expansion Joint | 3D view

► Features

- ✔ compensate universal movements and vibrations
- ✔ mixed couplings installment
- ✔ identical cross-sections
- ✔ minimal reactional forces

► Technical Specifications



Note | Type 51 - Fabric Expansion Joint | dimensional sketch

Type	Fabric
Series	W 51
Couplings	clamp/flange
Size/Range	by request *
Pressure	up to 500 mbars **
Axial	up to 30% of L
Lateral	up to 20% of L
Angular	acc. to designsheet

* limited by manufacturing technology

** special constructions for higher pressure may be possible