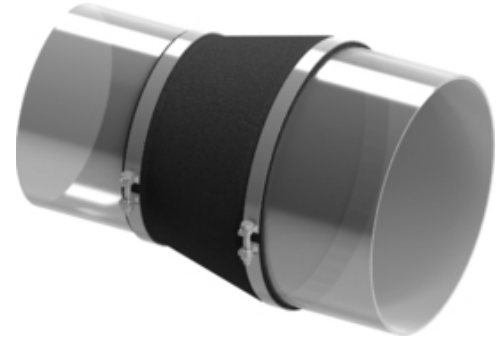


Type 15 Fabric Expansion Joint

Standard model conical fabric expansion joint composed of single- or multi-layer fabric, available in cylindrical or rectangular shape for mounting with clamps directly on the pipeline.

Conical design of the fabric is used to bridge differed pipe or conduit diameters (cross-sections). Can also be used as a fire protection expansion joint.

For detailed technical specifications on Type 15 fabric expansion joints please check the following table and documents or [contact us](#).

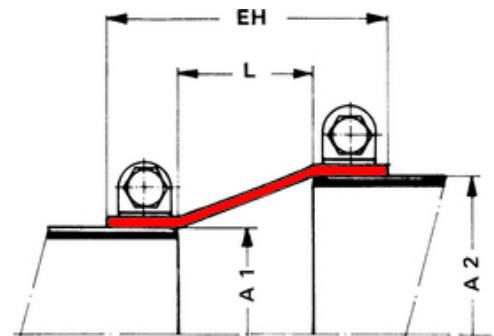


Note | Type 15 - Fabric Expansion Joint | 3D view

► Features

- ✔ compensate universal movements and vibrations
- ✔ easy and quick installment with clamps
- ✔ bridges various cross-sections
- ✔ fire protection expansion joint

► Technical Specifications



Note | Type 15 - Fabric Expansion Joint | dimensional sketch

Type	Fabric
Series	W 15
Couplings	clamps
Size/Range	by request *
Pressure	up to 500 mbars **
Axial	up to 50% of L
Lateral	up to 15% of L
Angular	acc. to designsheet

* limited by manufacturing technology

** special constructions for higher pressure may be possible